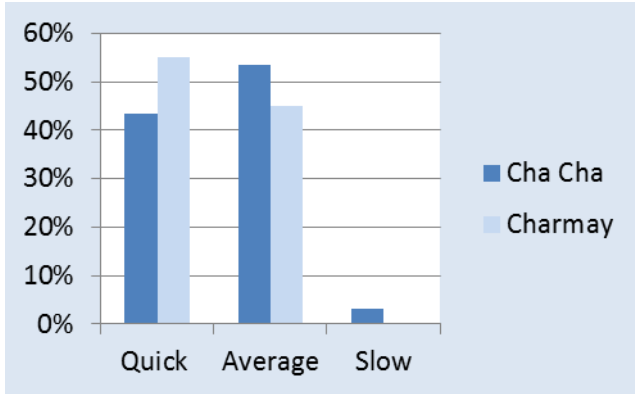


Our survey again shows that Null-Lox is quick to establish, agronomically sound, early to harvest and yields just as well if not better than other varieties

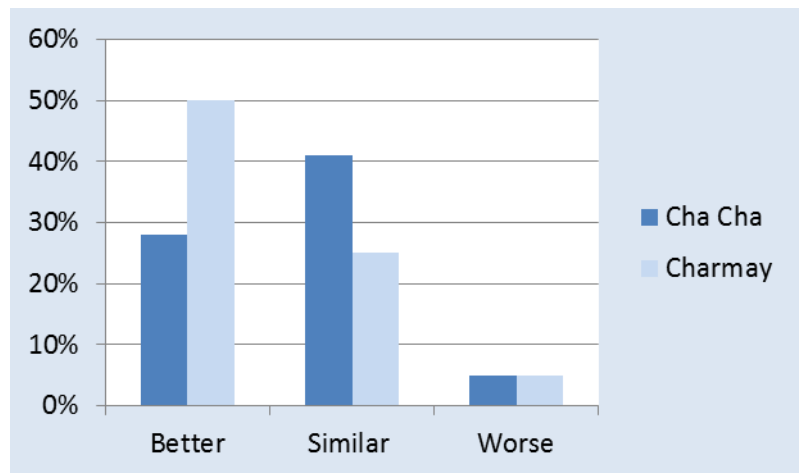
- How quick did the crop establish?



	Cha Cha	Charmay
Quick	43.5%	55%
Average	53.5%	45%
Slow	3%	0%

- How did the crop perform during the growing season in comparison with other spring barley crops?

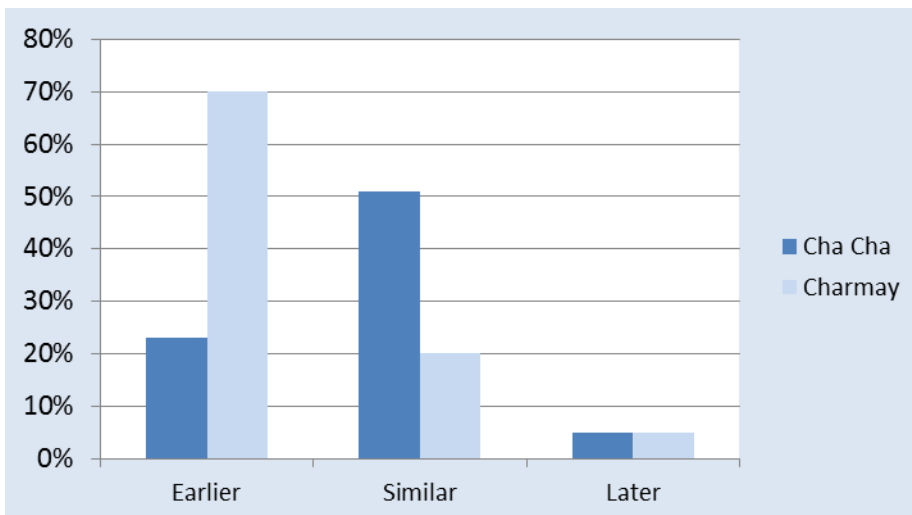
	Cha Cha	Charmay
Better	28%	50%
Similar	41%	25%
Worse	5%	5%
N/A	26%	20%



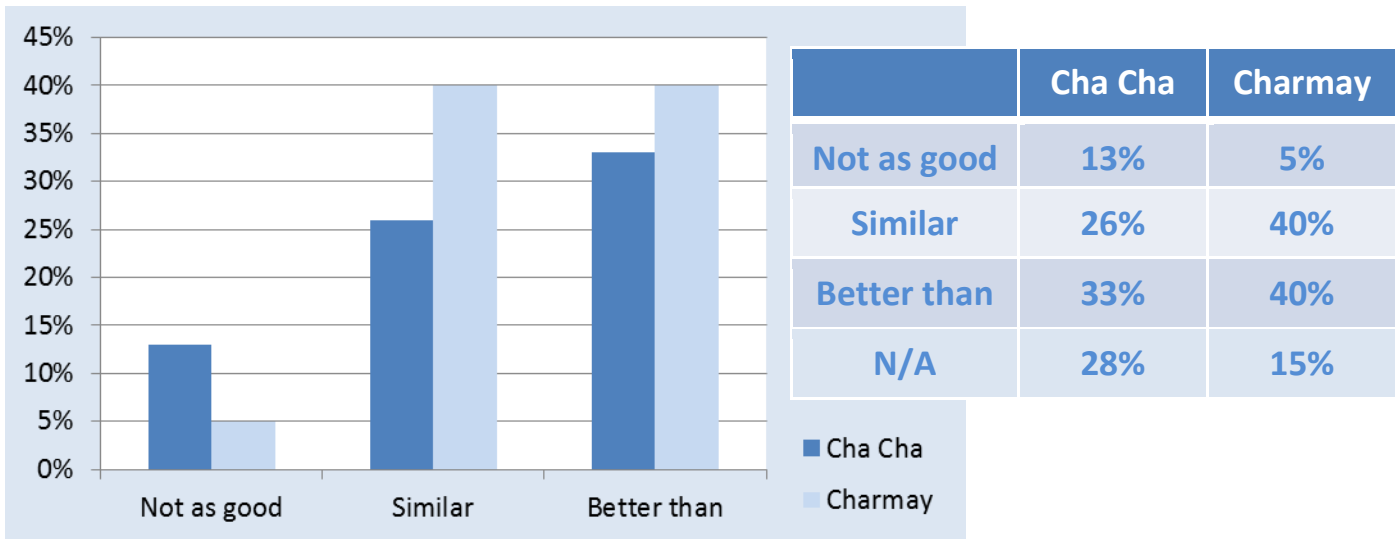
*All growers that chose N/A did not grow another spring barley crop to compare their Null-Lox against.

97% of growers experienced no disease issues*

- Was the variety early or late to combine compared to Tipple / Quench / Propino?



• How did the yield compare to Tipple/ Quench / Propino?



Yield	Avg t/ha
Null-Lox 2011	6.02
Tipple 2011	5.54
Null-Lox 2010	5.43
Tipple 2010	5.00

2011 Trials Results

- 15 varieties in two independent trials with OAT & Hutchinsons
- Current varieties performing well versus Tipple and Concerto
- Two new Null-Lox varieties came top of the trials out-performing Tipple, Quench, Concerto and Propino

95% of Growers said that they WOULD grow Null-Lox again*

- Grow a new exciting variety that has a secure end market
- Grow a crop where there are no surplus worries
- Grow a crop with a buyback linked to wheat futures
- One year contract – no long term tie-in
- Have a contract where you can fix the price when you think the price is right

Lindsey House
Hemswell Cliff
Gainsborough
DN21 5TH

www.gleadell.co.uk
enquiries@gleadell.co.uk
01427 421200



*Survey results taken from 59 growers of Cha Cha and Charmay in 2011