

# Null Lox varieties comparison

## Harvest survey 2010

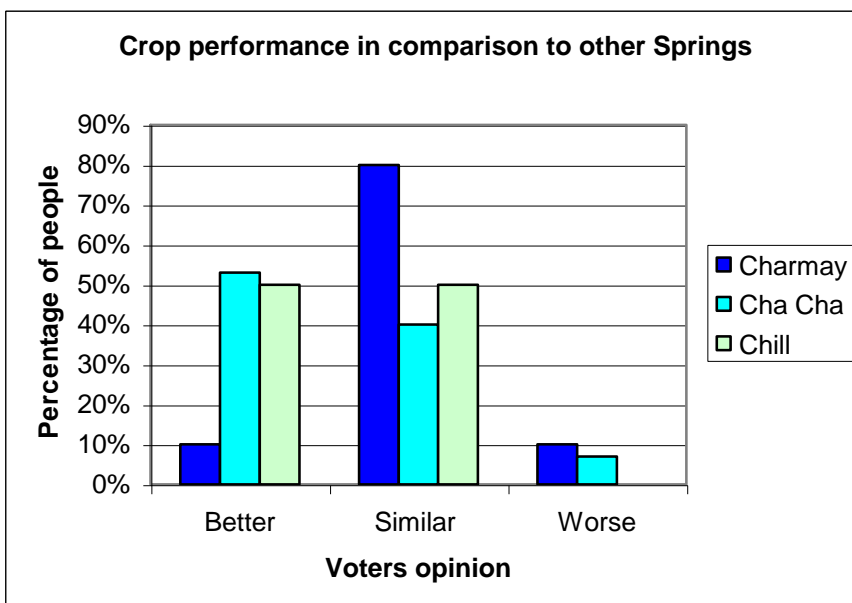
Null-lox is a new variety of Malting Barley, developed by Carlsberg Group Research, which is lacking in the Lox enzyme. Carlsberg researchers, who have worked with Heineken, have shown that without the Lox enzyme, the beers taste and foam is improved. This has also prolonged the life of the product by minimising the beer staling components.

- Crop Establishment**

	Charmay	Cha Cha	Chill		Charmay	Cha Cha	Chill
<b>Good</b>	10	13	4	<b>Good</b>	100%	87%	100%
<b>Average</b>	0	2	0	<b>Average</b>	0%	13%	0%
<b>Poor</b>	0	0	0	<b>Poor</b>	0%	0%	0%

- Crop performance in comparison to other springs**

	Charmay	Cha Cha	Chill		Charmay	Cha Cha	Chill
<b>Better</b>	1	8	2	<b>Better</b>	10%	53%	50%
<b>Similar</b>	8	6	2	<b>Similar</b>	80%	40%	50%
<b>Worse</b>	1	1	0	<b>Worse</b>	10%	7%	0%



From the survey the variety that voters thought was better than other spring varieties was Cha Cha, closely followed by Chill. However 7% of people thought Cha Cha was worse than other spring varieties. The variety closest to other spring varieties was Charmay.

- Did the crop suffer from disease or agronomic issues?**

	Charmay	Cha Cha	Chill		Charmay	Cha Cha	Chill
<b>Yes</b>	0	0	0	<b>Yes</b>	0%	0%	0%
<b>No</b>	10	15	4	<b>No</b>	100%	100%	100%

- Did the crop have any standing power or straw issues?

	Charmay	Cha Cha	Chill
Yes	3	5	1
No	7	10	3

	Charmay	Cha Cha	Chill
Yes			
No			

- Was the variety early or late compared to Tipple or Quench?

	Charmay	Cha Cha	Chill
Early	4	4	2
Similar	5	8	2
Late	1	3	0

	Charmay	Cha Cha	Chill
Early	40%	27%	50%
Similar	50%	53%	50%
Late	10%	20%	0%

- Did you have any combining issues?

	Charmay	Cha Cha	Chill
Yes	3	4	4
No	7	11	3

	Charmay	Cha Cha	Chill
Yes	30%	27%	75%
No	70%	73%	25%

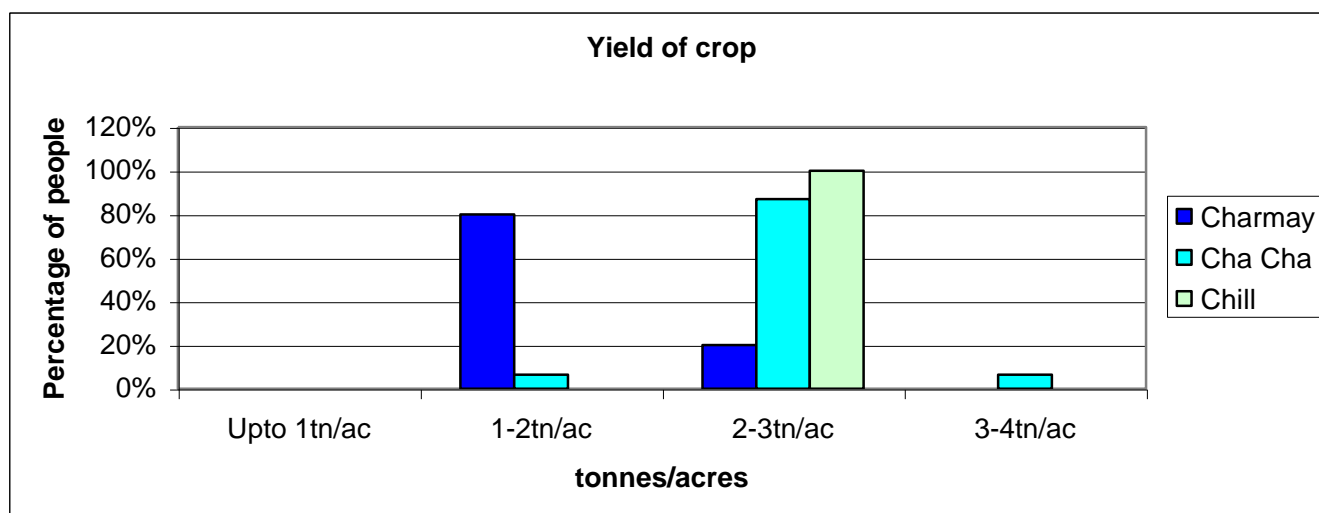
- Yield of crop

	Charmay	Cha Cha	Chill
Up to 1tn/ac	0	0	0
1-2tn/ac	8	1	0
2-3tn/ac	2	13	4
3-4tn/ac	0	1	0

The highest yielding variety was Cha Cha at 3-4tn/ac. Cha Cha also yielded most consistently at 2-3tn/ac.

The lowest consistent yield was Charmay at 1-2tn/ac.

	Charmay	Cha Cha	Chill
Up to 1tn/ac	0%	0%	0%
1-2tn/ac	80%	7%	0%
2-3tn/ac	20%	87%	100%
3-4tn/ac	0%	7%	0%



• How was the yield compared to Tipple?

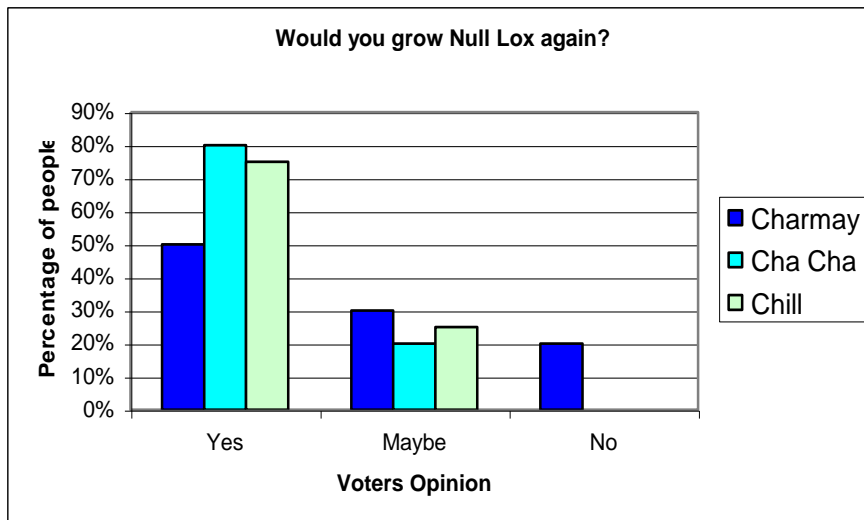
	Charmay	Cha Cha	Chill
<b>Better</b>	0	5	0
<b>Similar</b>	3	8	3
<b>Worse</b>	7	2	1

	Charmay	Cha Cha	Chill
<b>Better</b>	0%	33%	0%
<b>Similar</b>	30%	53%	75%
<b>Worse</b>	70%	13%	25%

• Would you grow Null Lox again?

	Charmay	Cha Cha	Chill
<b>Yes</b>	5	12	3
<b>Maybe</b>	3	3	1
<b>No</b>	2	0	0

	Charmay	Cha Cha	Chill
<b>Yes</b>	50%	80%	75%
<b>Maybe</b>	30%	20%	25%
<b>No</b>	20%	0%	0%



Out of the people who completed the survey the most popular variety that they wanted to grow again was Cha Cha, followed by Chill. There were only two people that voted saying they would grow a variety again and this was for Charmay.

**Facts**

- Null Lox has been successfully grown and trialled in Denmark, Sweden, Finland, France, Poland, Russia and the Ukraine.
- Agronomically the Null Lox varieties are already competitive against some traditional varieties such as Tipple and Quench
- As the breeding programme progresses it is likely that Null Lox varieties will become not just the benchmark in the UK but all over the EU.



**Grower benefits**

- Grow a new exciting variety that has a secure end market.
- Grow a crop where there are no surplus worries.
- Grow a crop with a buyback linked to wheat futures.
- Have a contract where you can fix the price when you think the price is right.